

Figure 1: Total gross migration flows to Ontario, 1971-2004

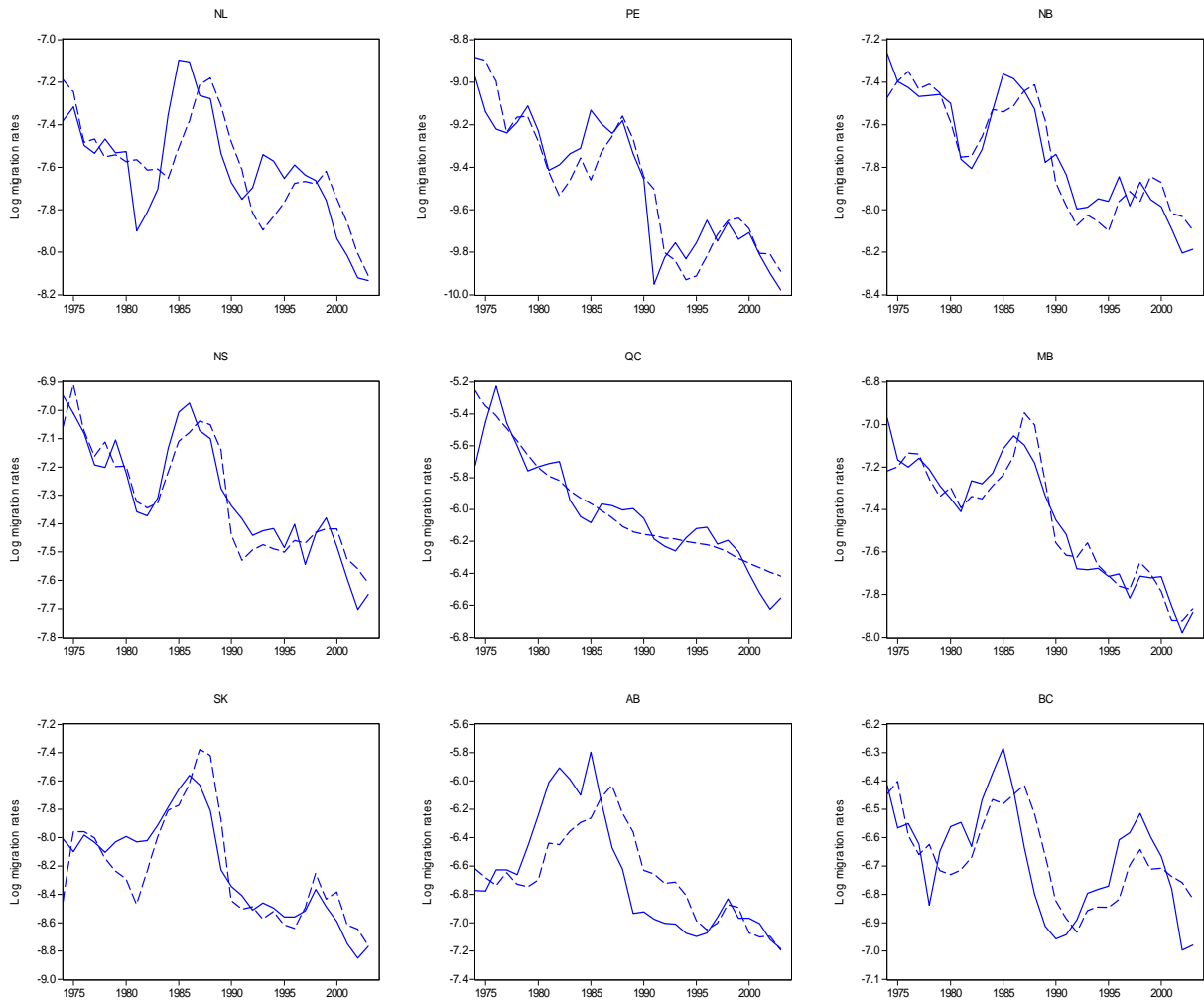


Figure 2: Log migration rates (solid line) and FM-OLS estimates (dashed line), 1974-2004.

Table 1: Residuals Cross-correlation

Province	NL	PE	NS	NB	QC	MB	SK	AB	BC
NL	1.00								
PE	0.30	1.00							
NS	0.18	0.14	1.00						
NB	0.13	0.38	0.72	1.00					
QC	0.07	0.03	-0.06	-0.11	1.00				
MB	0.06	0.30	0.53	0.47	-0.36	1.00			
SK	0.52	0.44	0.51	0.47	0.16	0.38	1.00		
AB	0.60	0.35	-0.11	-0.02	0.08	0.19	0.54	1.00	
BC	0.40	0.34	0.33	0.45	-0.01	0.24	0.50	0.58	1.00

CD Statistic: 11.387 (0.000)

Notes: The cross-section correlation matrix is computed based on the residuals in (1). The total number of cross-correlations is 36, of which 16 are significant according to the usual approximate critical bounds $\pm 2T^{-1/2} = \pm 0.35$. The CD statistic refers to the test statistic proposed in Pesaran (2004); p -value in parentheses.